

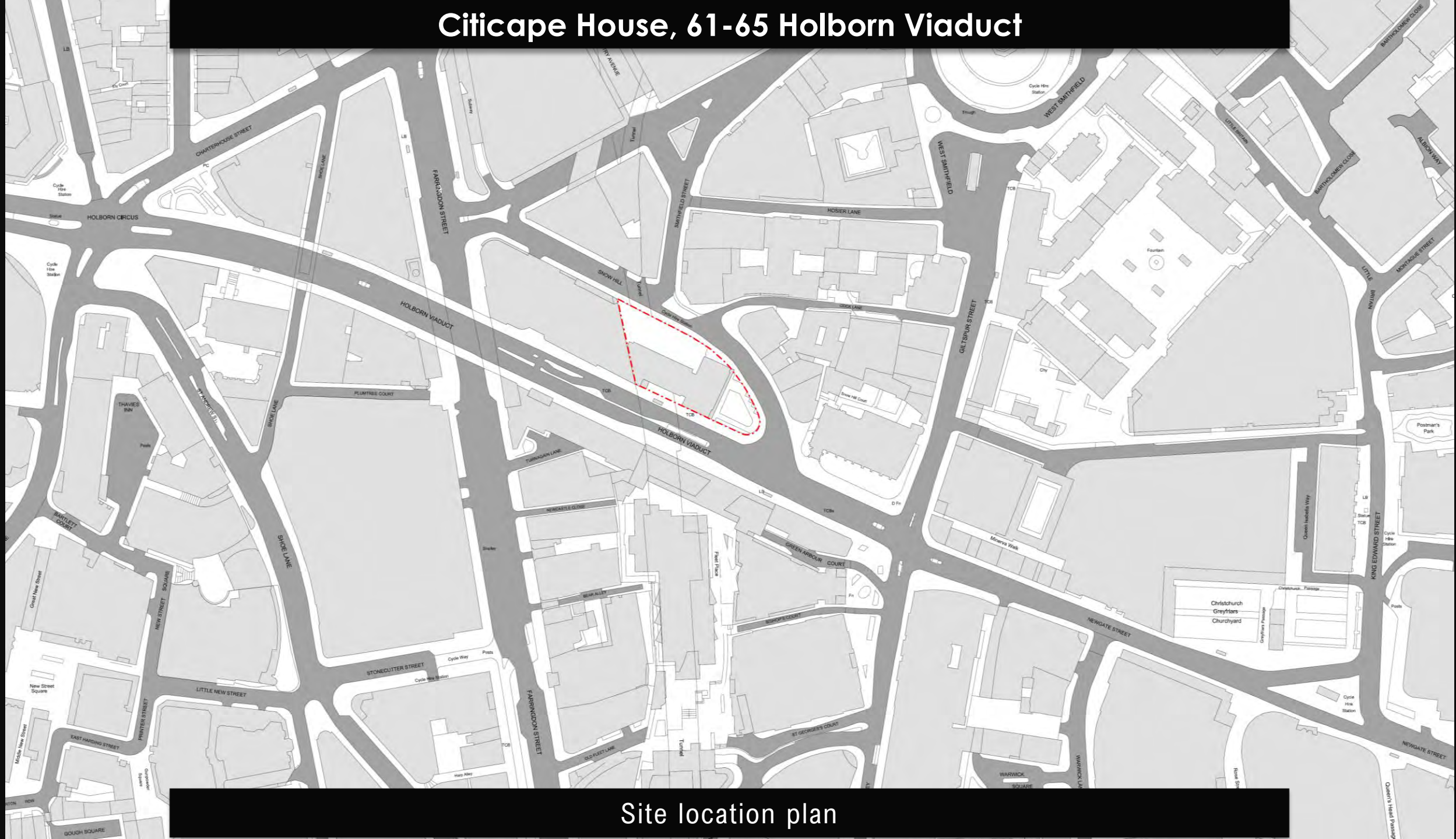
# PLANNING & TRANSPORTATION COMMITTEE

28 January 2020



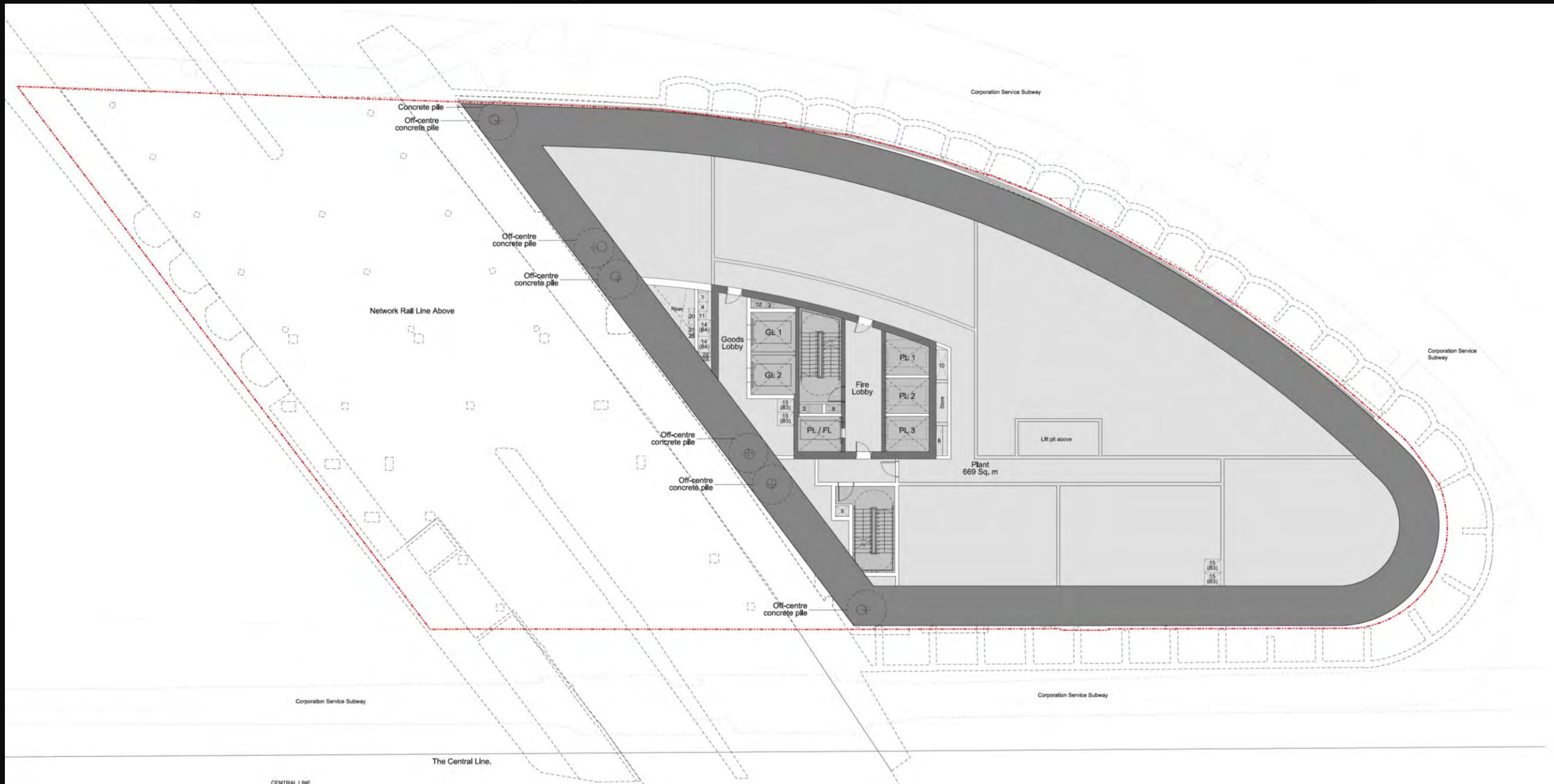


# Citicape House, 61-65 Holborn Viaduct



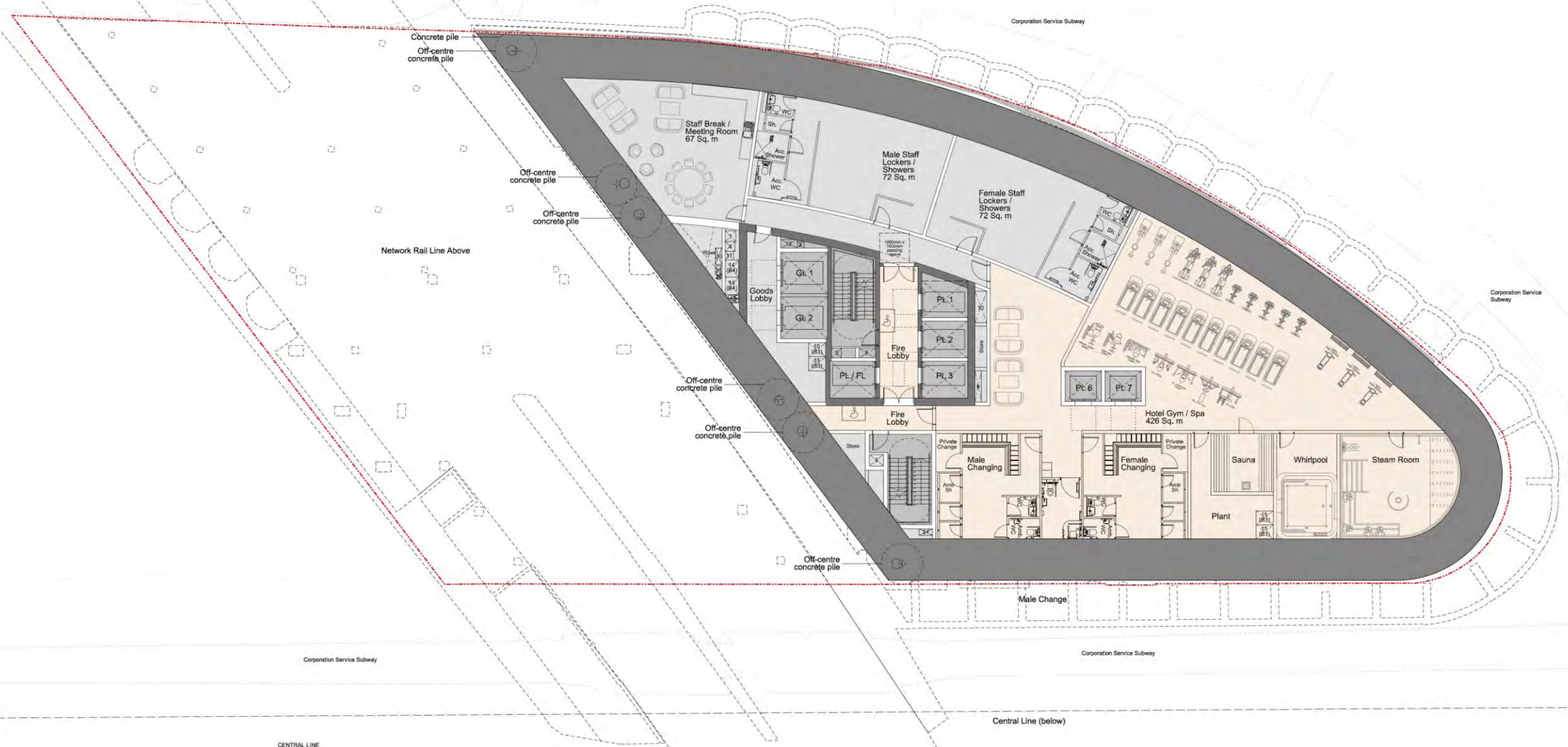
Site location plan

## Basement level 4 – General arrangement





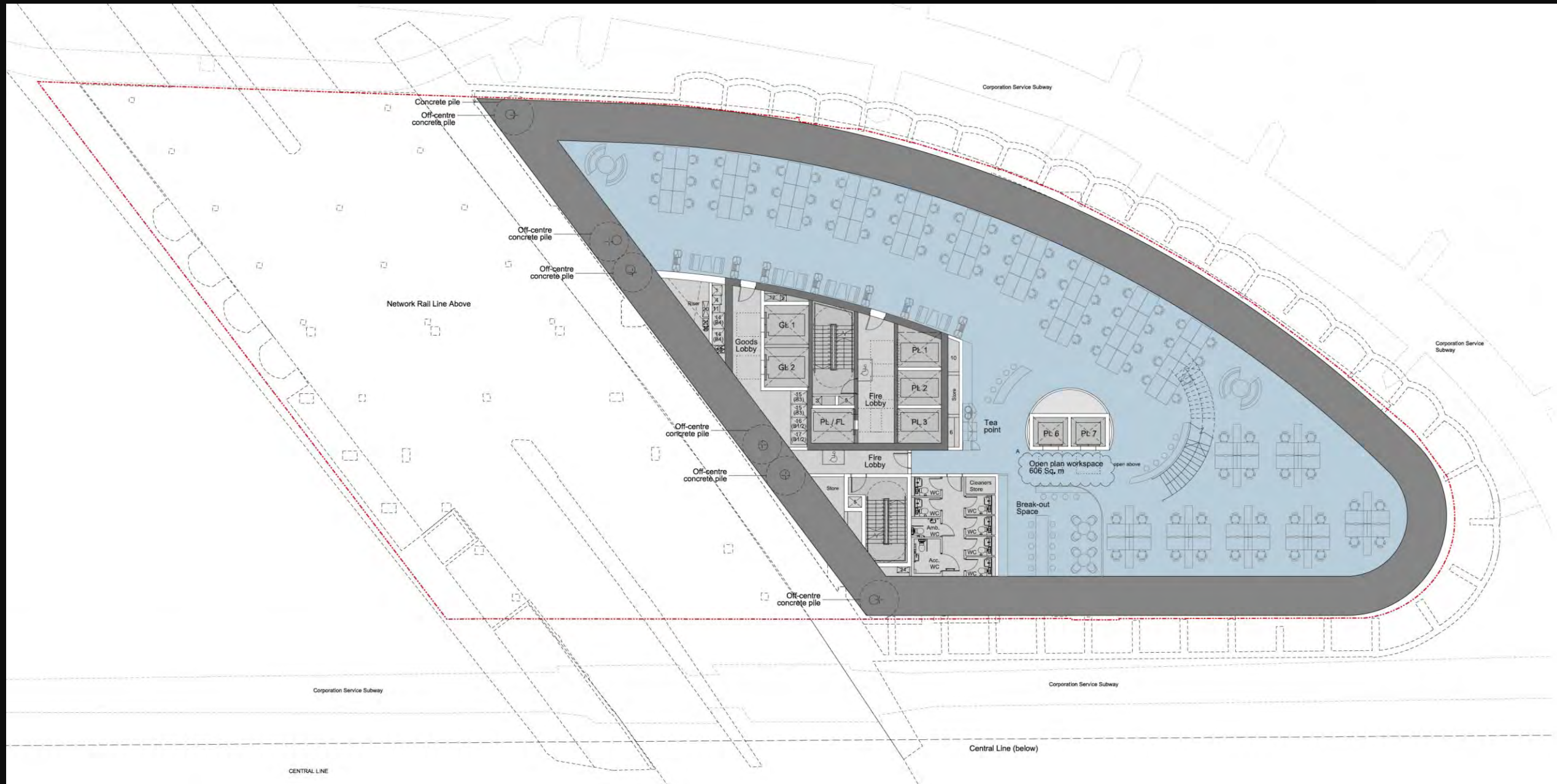
# Citicape House, 61-65 Holborn Viaduct



Basement level 3 – General arrangement



# Citicape House, 61-65 Holborn Viaduct



Basement level 2 – General arrangement



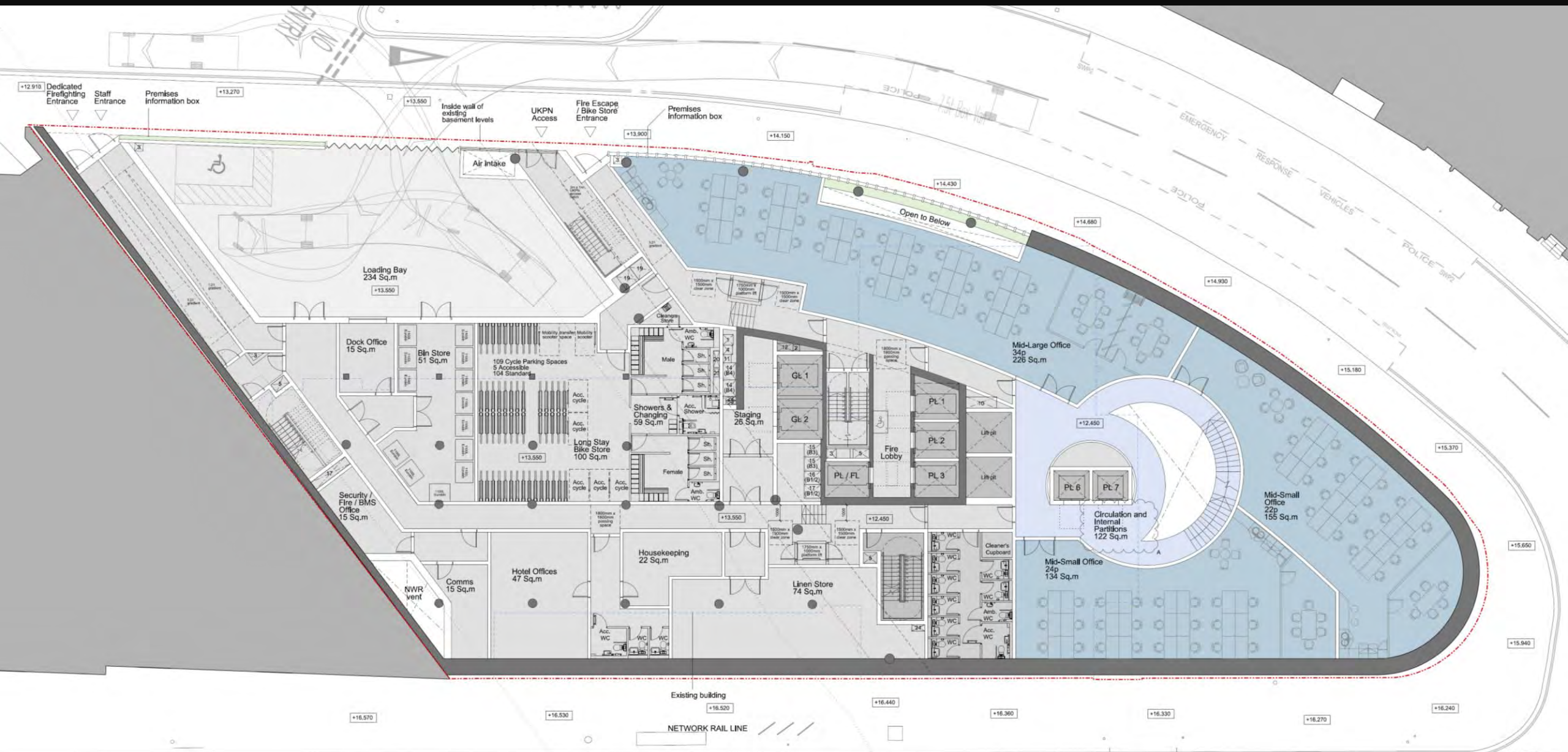
Architectural floor plan of a building, likely a station or office complex, showing various rooms and substation areas. The plan includes the following labeled areas:

- UKPN Substation:** 4500 x 9000
- UKPN 1500 kVA Substation:** 4500x5000
- Landlord Switchroom**
- Small Office:** 8p, 48 Sq.m
- Mid-Small Office:** 20p, 92 Sq.m
- Small Office:** 8p, 43 Sq.m
- Break-out Space:** 16 Sq.m
- Tea point**
- Small Office:** 4p, 27 Sq.m
- Small Office:** 4p, 24 Sq.m
- Small Office:** 2p, 15 Sq.m
- Mid-Small Office:** 24p, 111 Sq.m
- Meeting Room:** 8p, 17 Sq.m
- Meeting Room:** 8p, 17 Sq.m
- Meeting Room:** 10p, 24 Sq.m
- Circulation and Internal Partitions:** 154 Sq.m
- Plt 6**, **Plt 7**
- Fire Lobby**
- Goods Lobby**
- Plt 1**, **Plt 2**, **Plt 3**
- Plt / FL**
- WC** (multiple locations)
- Acc. WC**
- Lightwell**
- Structural column**
- NWR emergency escape stair - access arrangement to station platform TBC**
- Network Rail Line Above**
- Corporation Service Subway** (multiple locations)
- EMERGENCY RESPONSE VEHICLES**
- POLICE SWG**
- BUS STOP**
- CLEAR**
- CENTRAL LINE**
- 12000 LIBR**

## Basement level 1 – General arrangement



# Citicape House, 61-65 Holborn Viaduct



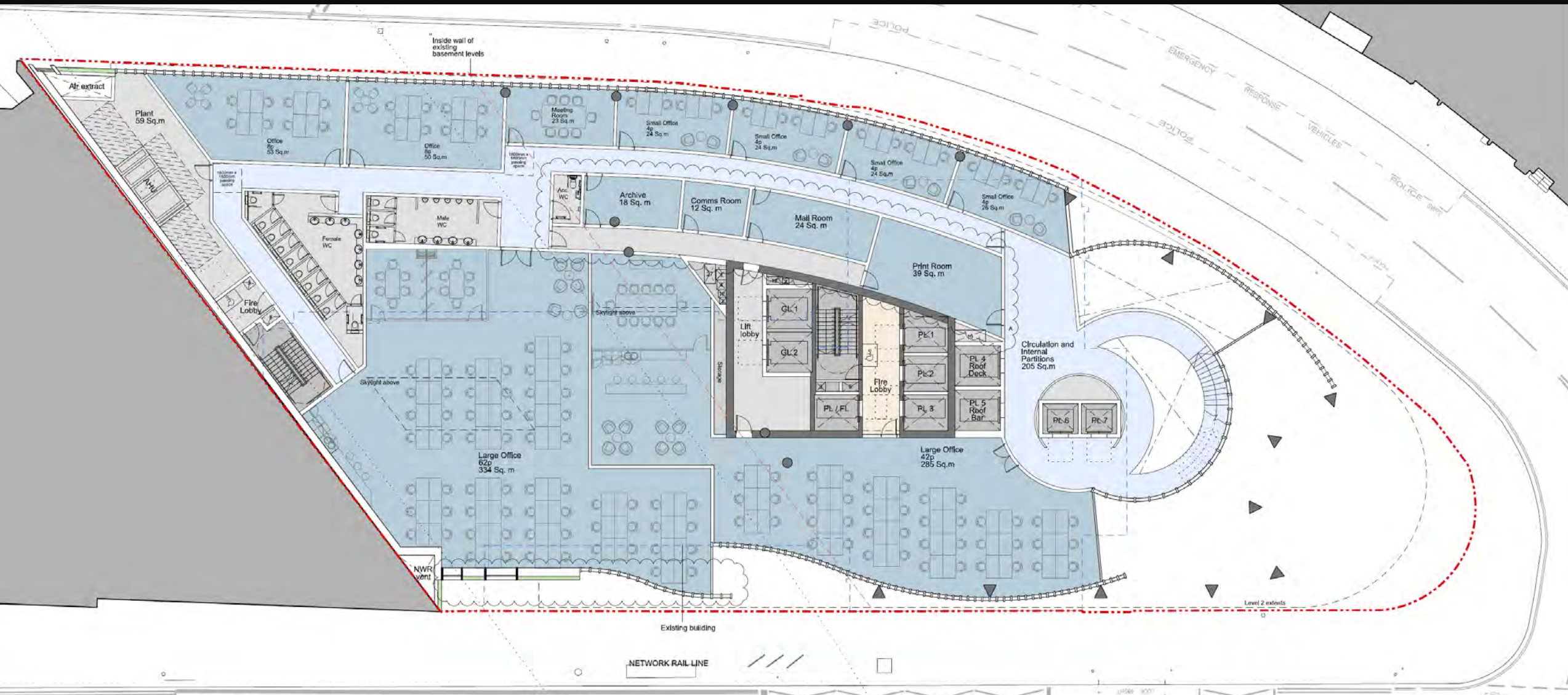
Lower ground floor – General arrangement







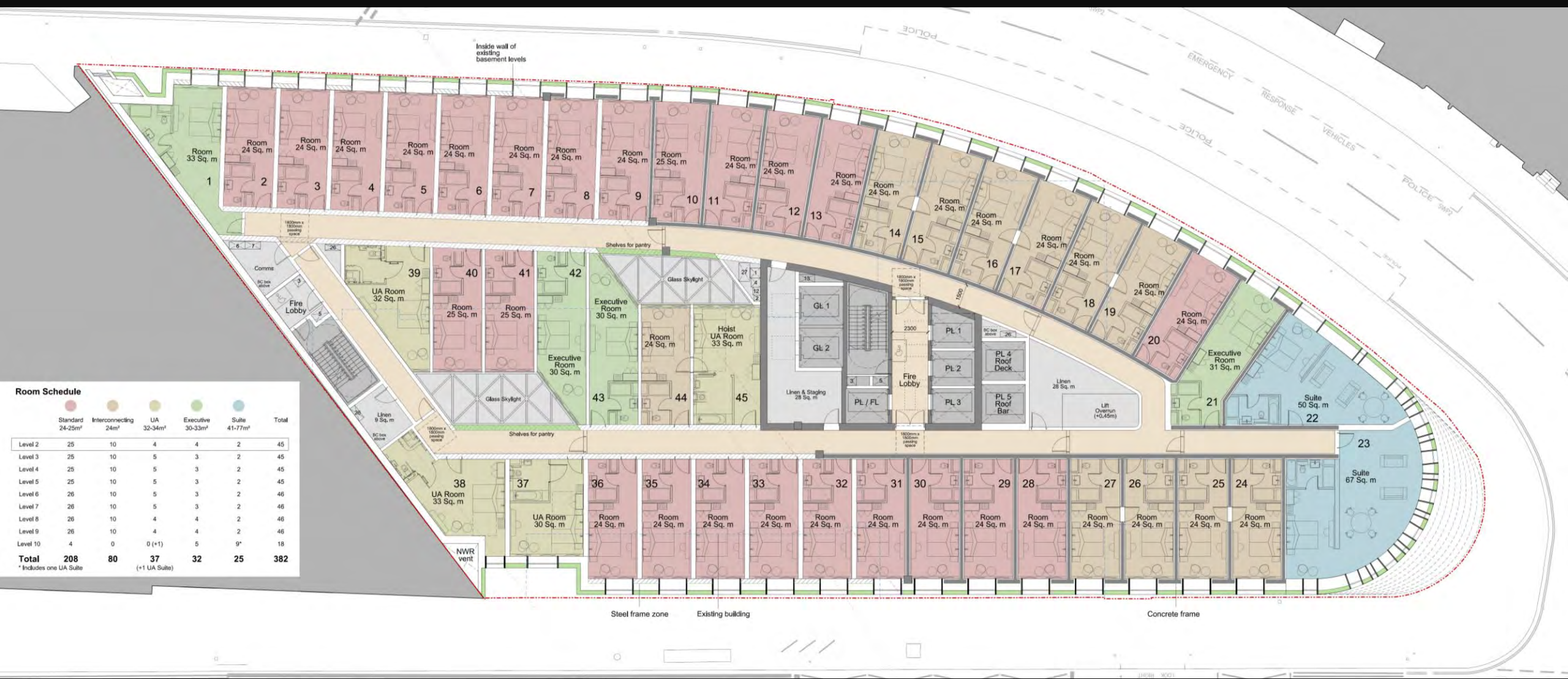
# Citicape House, 61-65 Holborn Viaduct



First floor – General arrangement

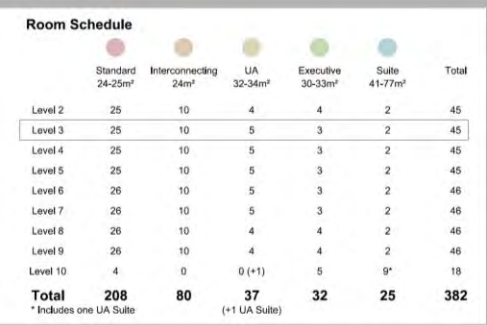


# Citicape House, 61-65 Holborn Viaduct



Level 2 – General arrangement







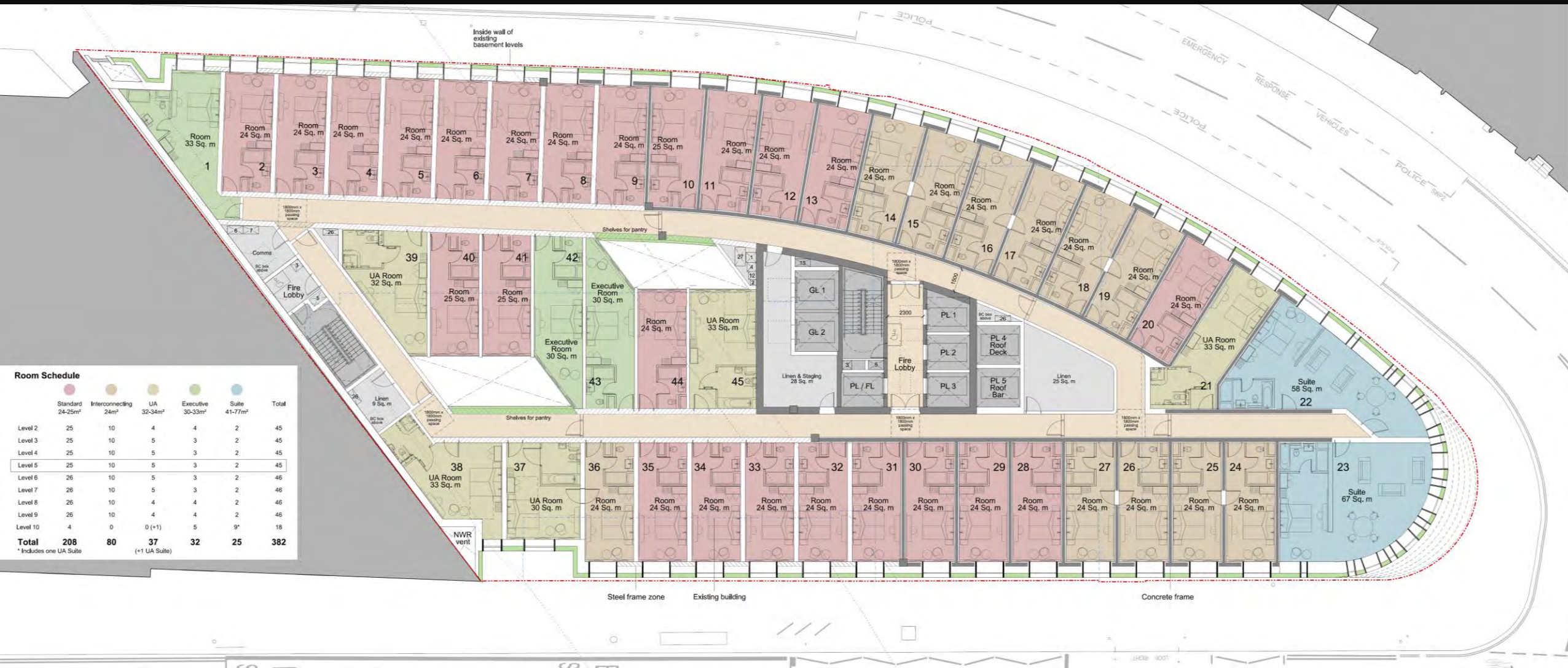
# Citicape House, 61-65 Holborn Viaduct



Level 4 – General arrangement



# Citicape House, 61-65 Holborn Viaduct



Level 5 – General arrangement



# Citicape House, 61-65 Holborn Viaduct



Level 6 – General arrangement



# Citicape House, 61-65 Holborn Viaduct

**Room Schedule**

	Standard 24-25m <sup>2</sup>	Interconnecting 24m <sup>2</sup>	UA 32-34m <sup>2</sup>	Executive 30-33m <sup>2</sup>	Suite 41-77m <sup>2</sup>	Total
Level 2	25	10	4	4	2	45
Level 3	25	10	5	3	2	45
Level 4	25	10	5	3	2	45
Level 5	25	10	5	3	2	45
Level 6	26	10	5	3	2	46
Level 7	26	10	5	3	2	46
Level 8	26	10	4	4	2	46
Level 9	26	10	4	4	2	46
Level 10	4	0	0 (+1)	5	9*	18
<b>Total</b>	<b>208</b>	<b>80</b>	<b>37</b> (*1 UA Suite)	<b>32</b>	<b>25</b>	<b>382</b>

\* Includes one UA Suite

Level 7 – General arrangement

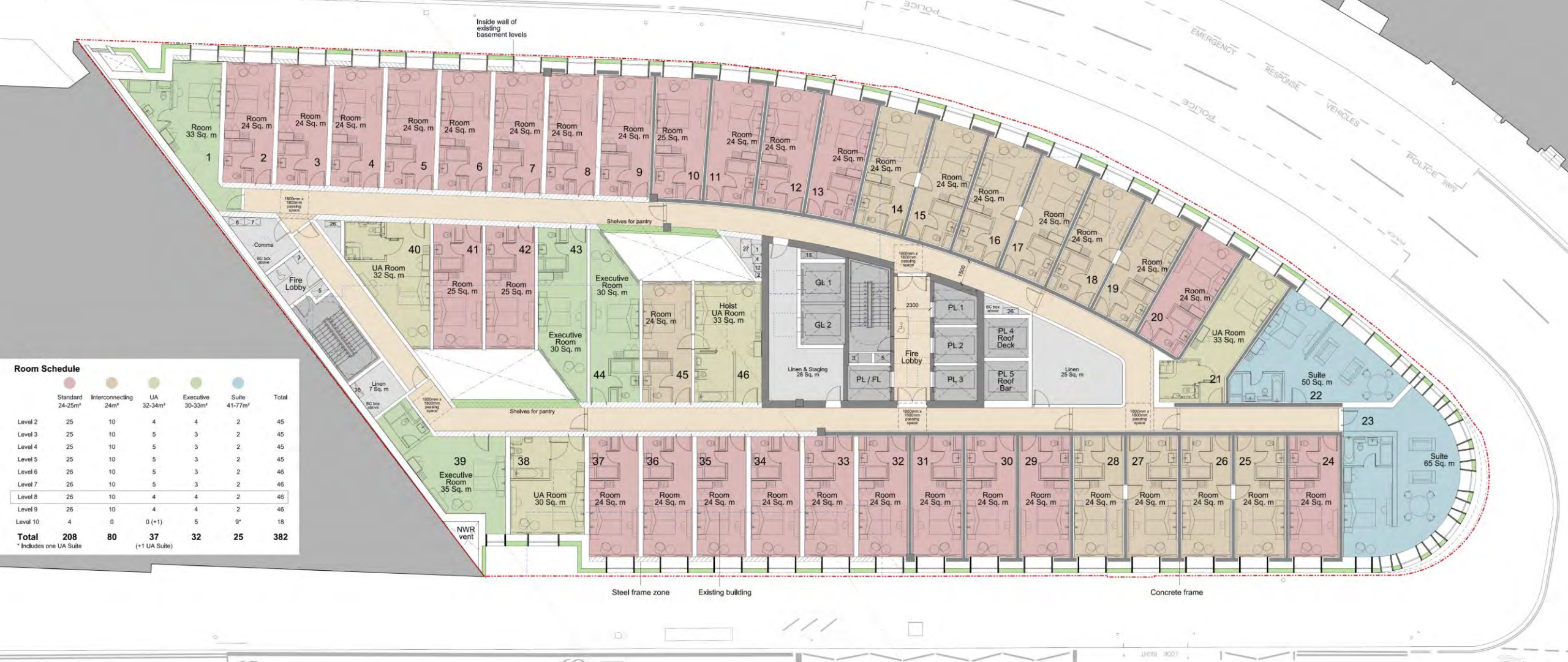
	Standard 24-25m²	Interconnecting 24m²	UA 32-34m²	Executive 30-33m²	Suite 41-77m²	Total
Level 2	25	10	4	4	2	45
Level 3	25	10	5	3	2	45
Level 4	25	10	5	3	2	45
Level 5	25	10	5	3	2	45
Level 6	26	10	5	3	2	46
Level 7	26	10	5	3	2	46
Level 8	26	10	4	4	2	46
Level 9	26	10	4	4	2	46
Level 10	4	0	0 (+1)	5	9*	18
<b>Total</b>	<b>208</b>	<b>80</b>	<b>37</b> (+1 UA Suite)	<b>32</b>	<b>25</b>	<b>382</b>

\* Includes one UA Suite

## Level 7 – General arrangement



**Citicape House, 61-65 Holborn Viaduct**



## Level 8 – General arrangement



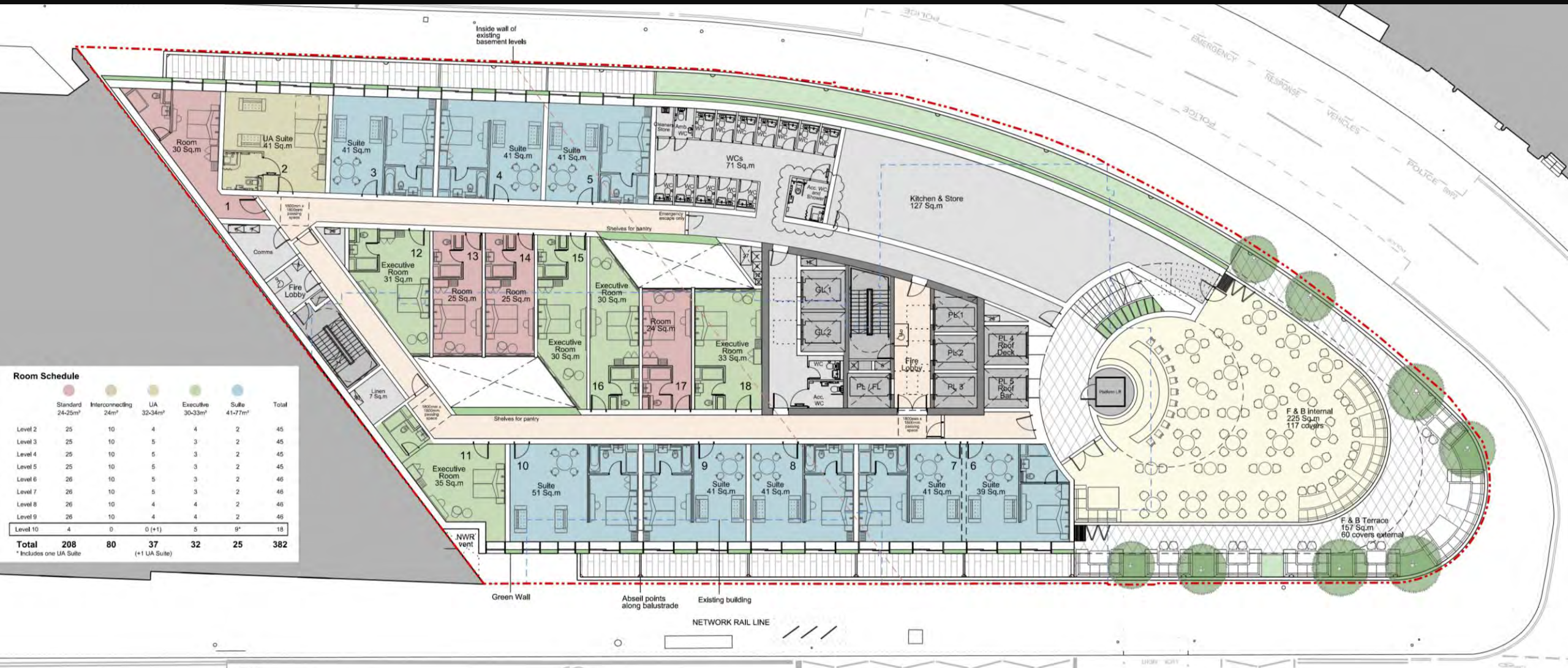
# Citicape House, 61-65 Holborn Viaduct



Level 9 – General arrangement



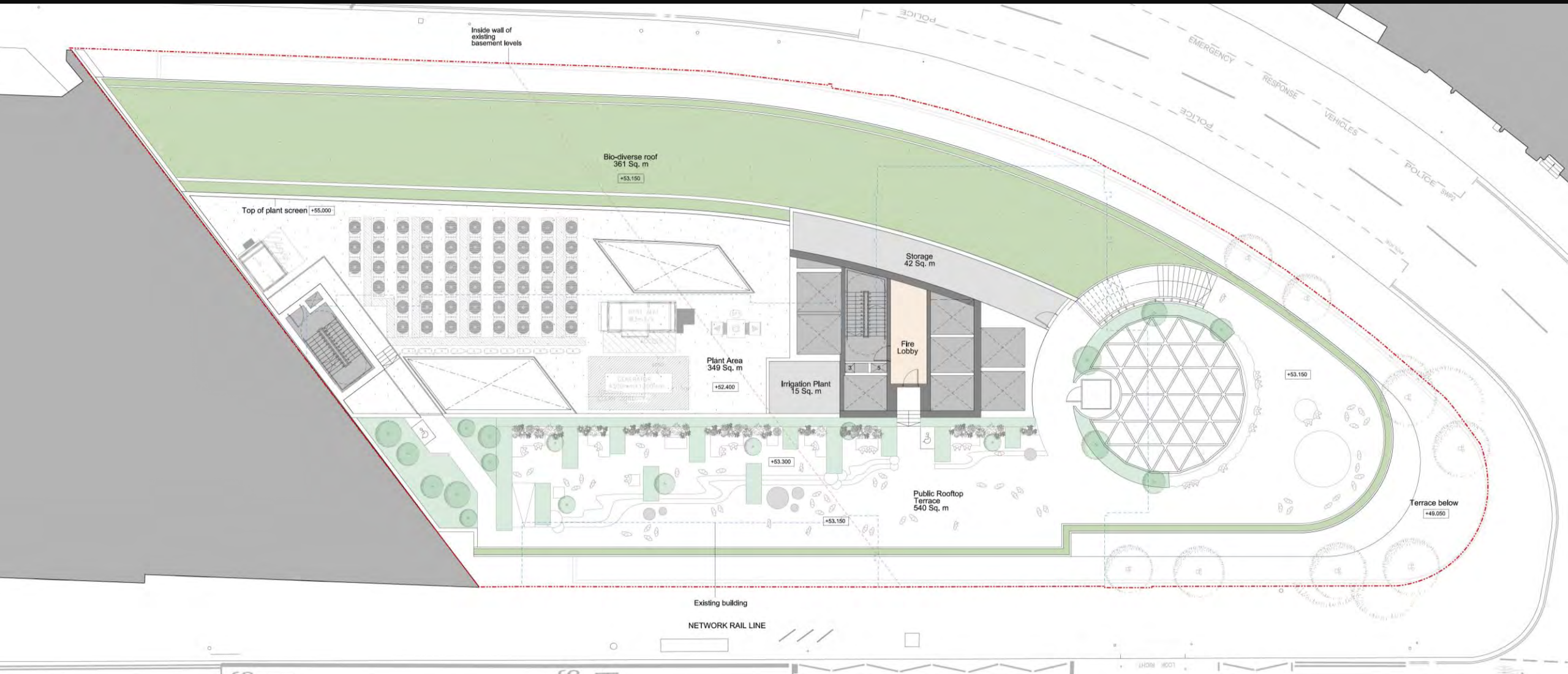
# Citicape House, 61-65 Holborn Viaduct



Level 10 – General arrangement



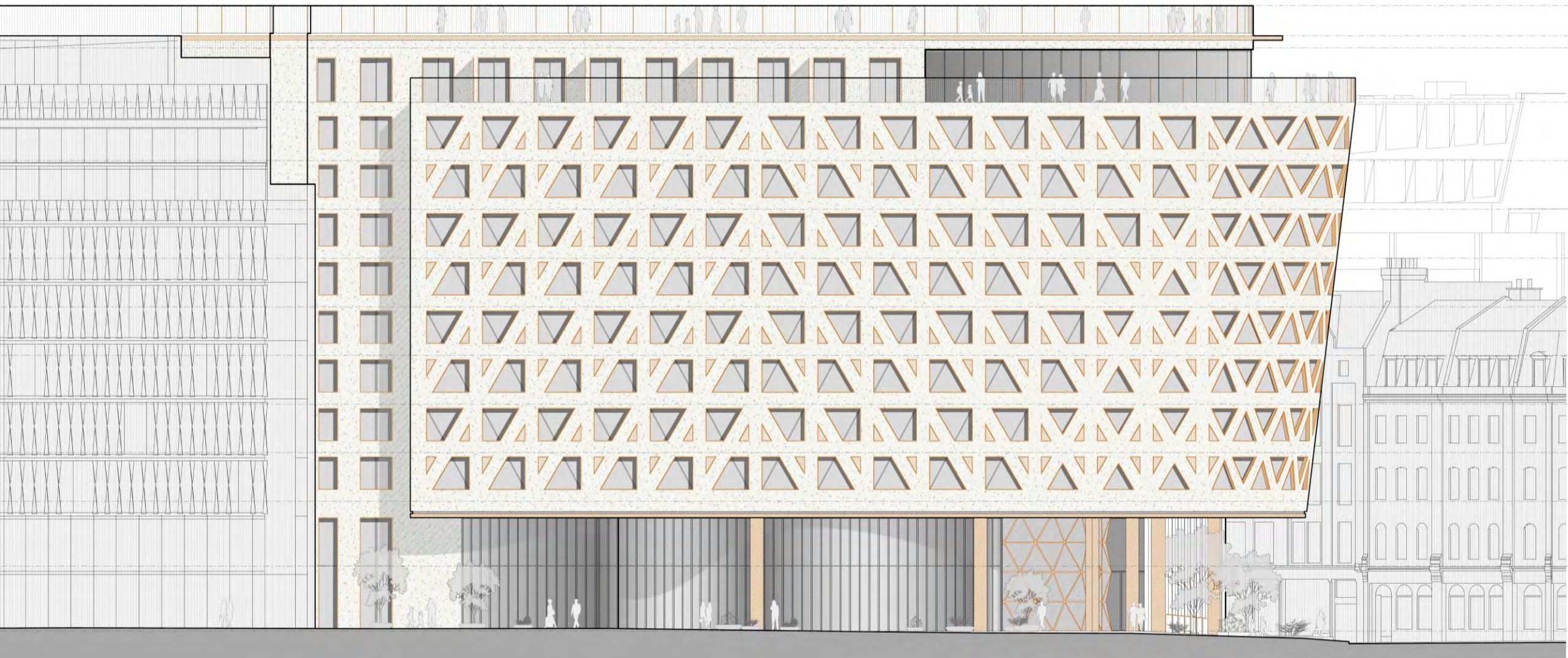
# Citicape House, 61-65 Holborn Viaduct



Level 11 Roof Terrace – General arrangement



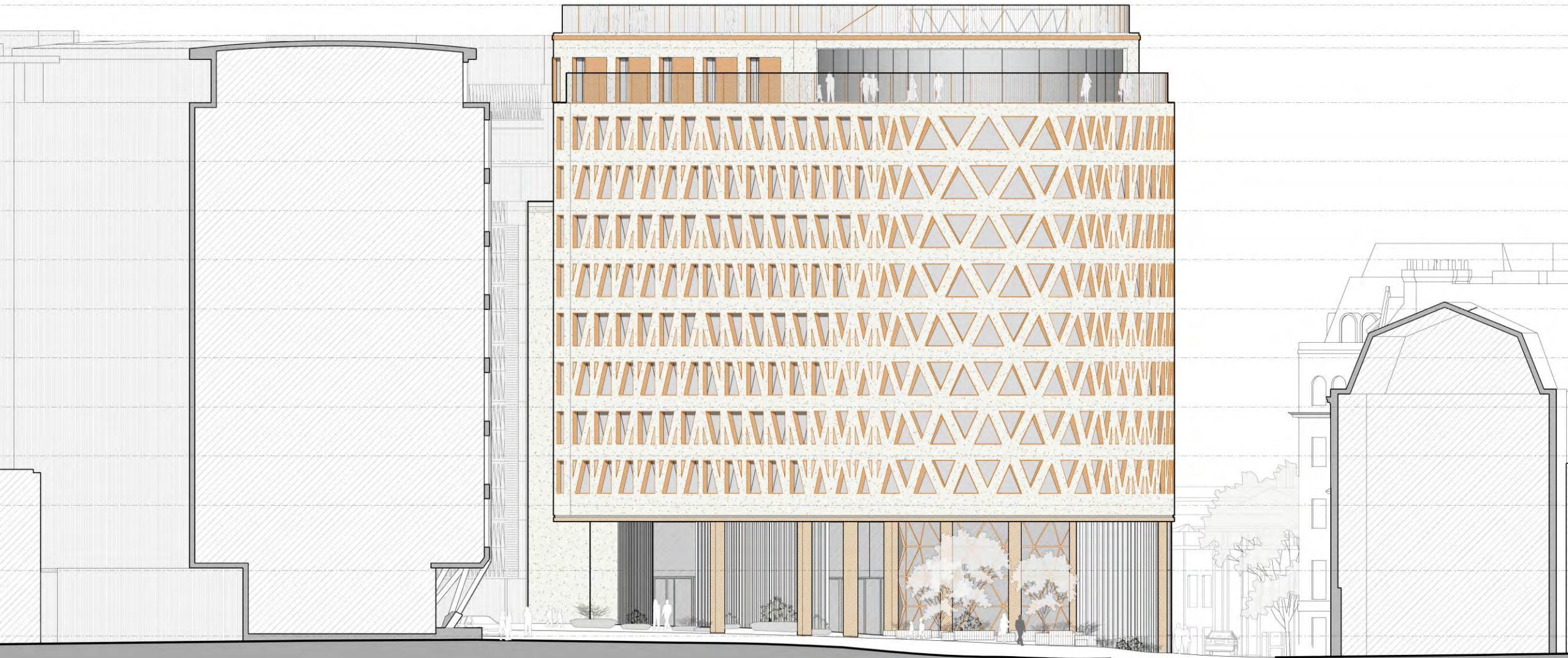
# Citicape House, 61-65 Holborn Viaduct



Elevation - Holborn Viaduct



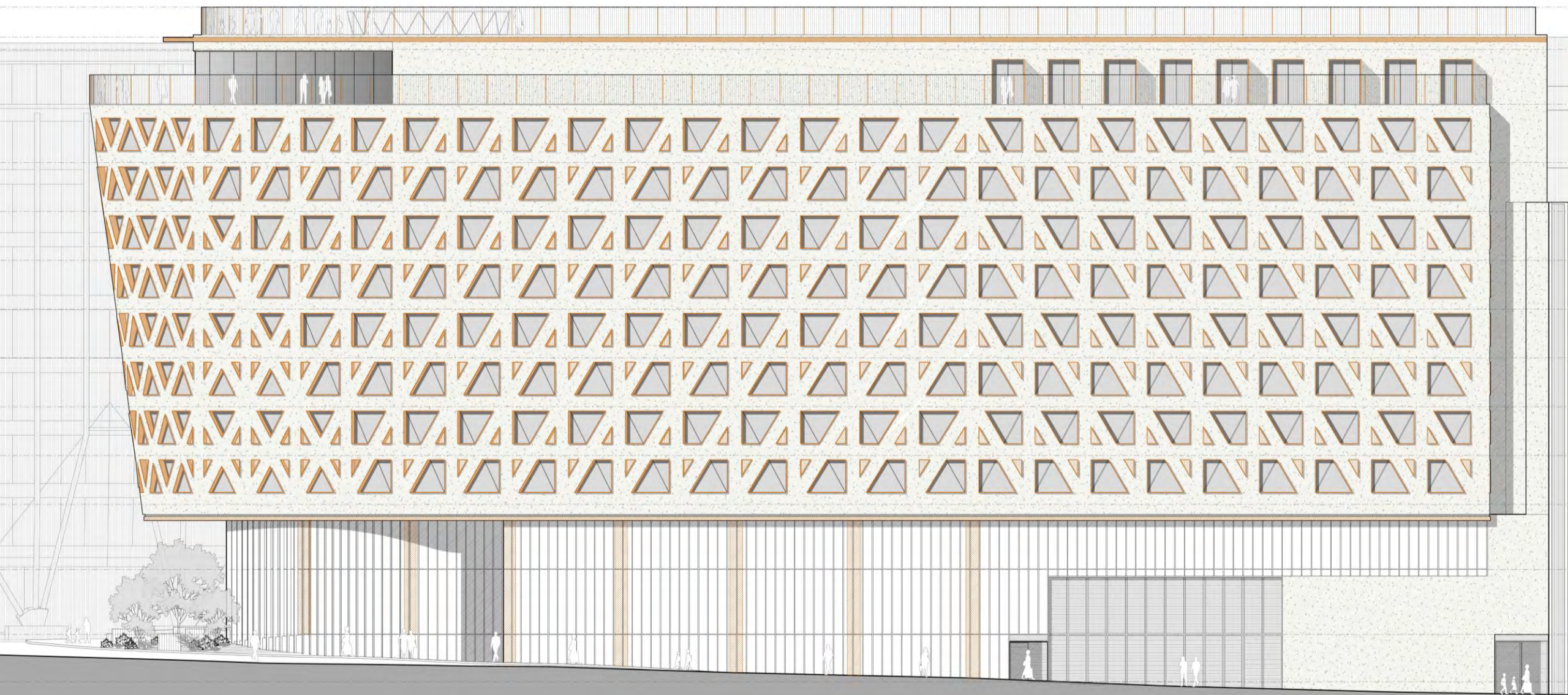
# Citicape House, 61-65 Holborn Viaduct



Elevation – Holborn Viaduct & Snow Hill Junction



# Citicape House, 61-65 Holborn Viaduct



Elevation – Snow Hill



# Citicape House, 61-65 Holborn Viaduct



Existing view from Charterhouse Street



# Citicape House, 61-65 Holborn Viaduct



Proposed view from Charterhouse Street



# Citicape House, 61-65 Holborn Viaduct



Existing view from Holborn Viaduct



# Citicape House, 61-65 Holborn Viaduct



Proposed view from Holborn Viaduct



# Citicape House, 61-65 Holborn Viaduct



Existing view from Old Bailey



# Citicape House, 61-65 Holborn Viaduct



Proposed view from Old Bailey



# Citicape House, 61-65 Holborn Viaduct



Existing view from Warwick Lane



# Citicape House, 61-65 Holborn Viaduct



Proposed view from Warwick Lane



# Citicape House, 61-65 Holborn Viaduct



Existing view from Smithfield Street



# Citicape House, 61-65 Holborn Viaduct



Proposed view from Smithfield Street



# Citicape House, 61-65 Holborn Viaduct



Existing view from Snow Hill



# Citicape House, 61-65 Holborn Viaduct



Proposed view from Snow Hill



# Citicape House, 61-65 Holborn Viaduct



Existing view from West Smithfield



# Citicape House, 61-65 Holborn Viaduct



Proposed view from West Smithfield



# Citicape House, 61-65 Holborn Viaduct



Proposed visual



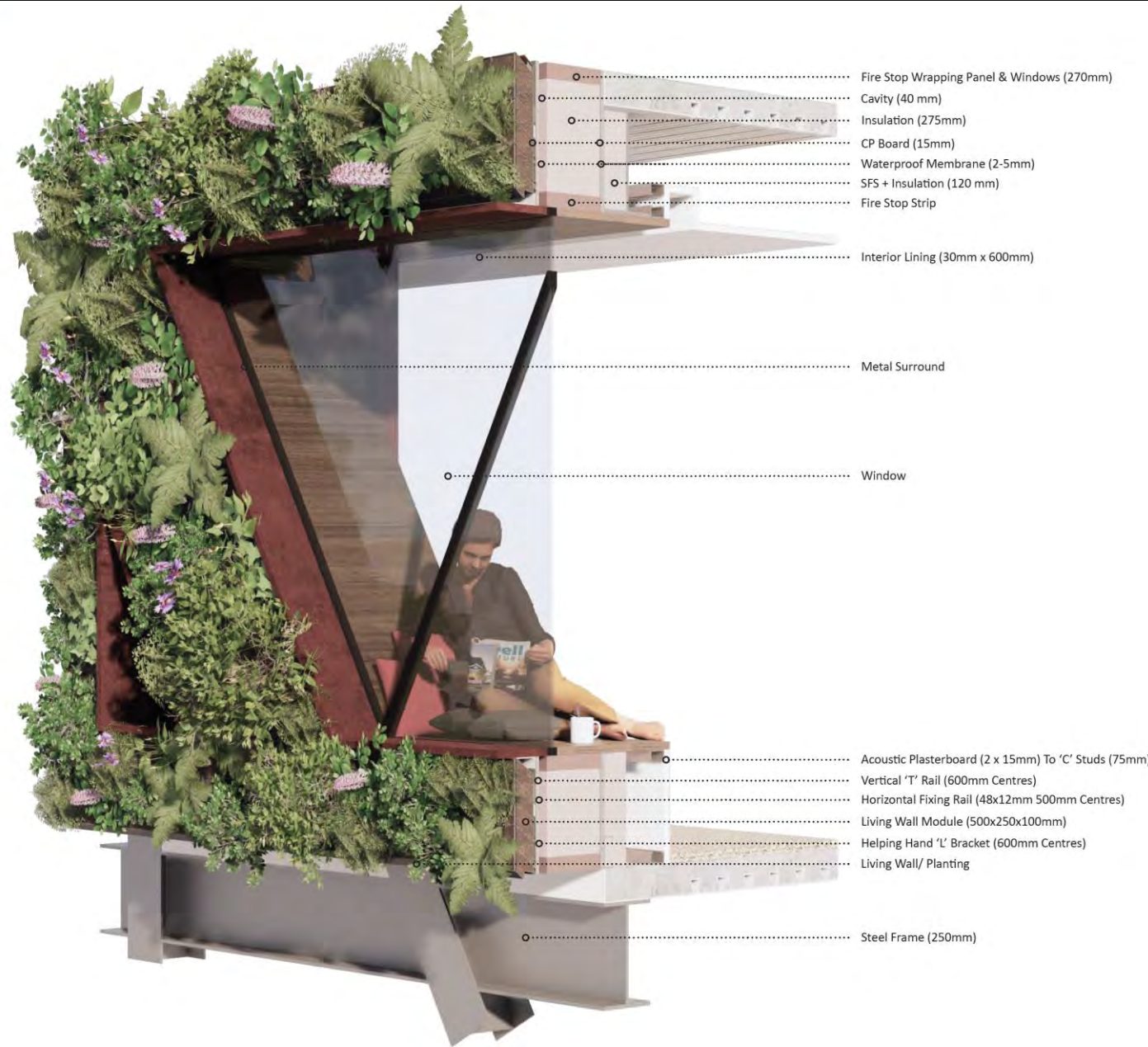
# Citicape House, 61-65 Holborn Viaduct



Proposed visual



# Citicape House, 61-65 Holborn Viaduct



Proposed facade



# Citicape House, 61-65 Holborn Viaduct



Proposed aerial view



# Citicape House, 61-65 Holborn Viaduct



Proposed visual



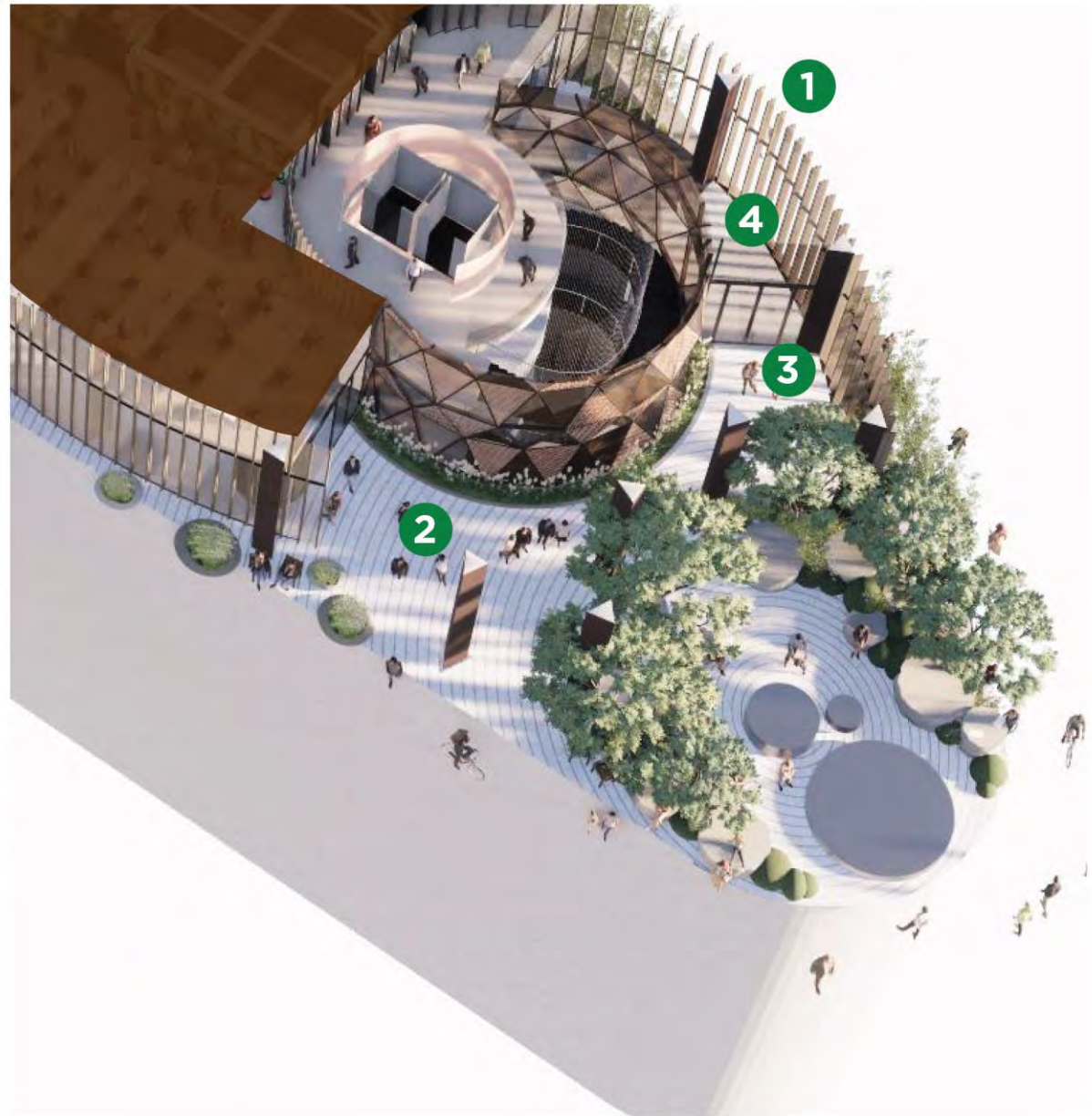
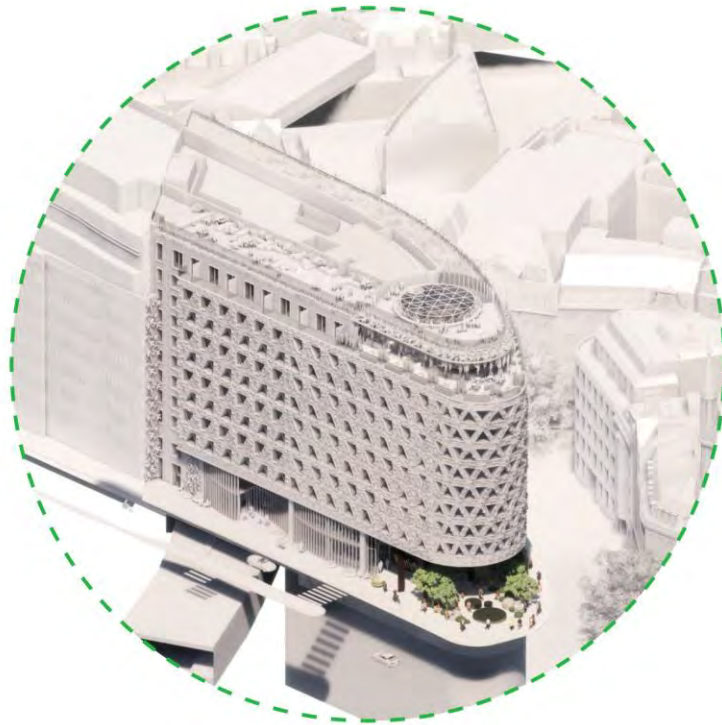
# Citicape House, 61-65 Holborn Viaduct



Proposed visuals



# Citicape House, 61-65 Holborn Viaduct



Proposed viewing gallery lobby & grand stair



# Citicape House, 61-65 Holborn Viaduct



Proposed visuals - interior



# Citicape House, 61-65 Holborn Viaduct

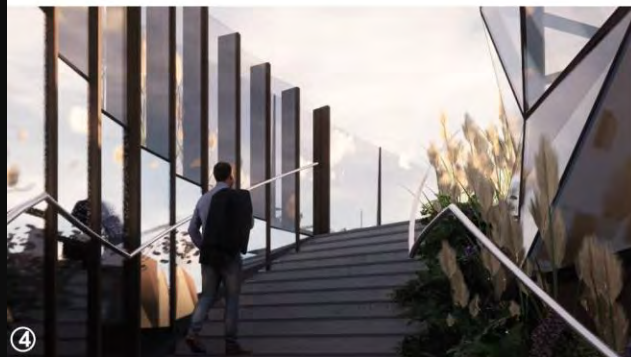
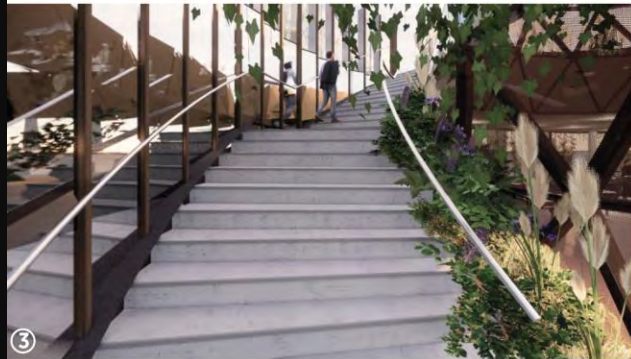
Viewing Gallery Lobby and Skybar



Proposed viewing gallery lobby & skybar



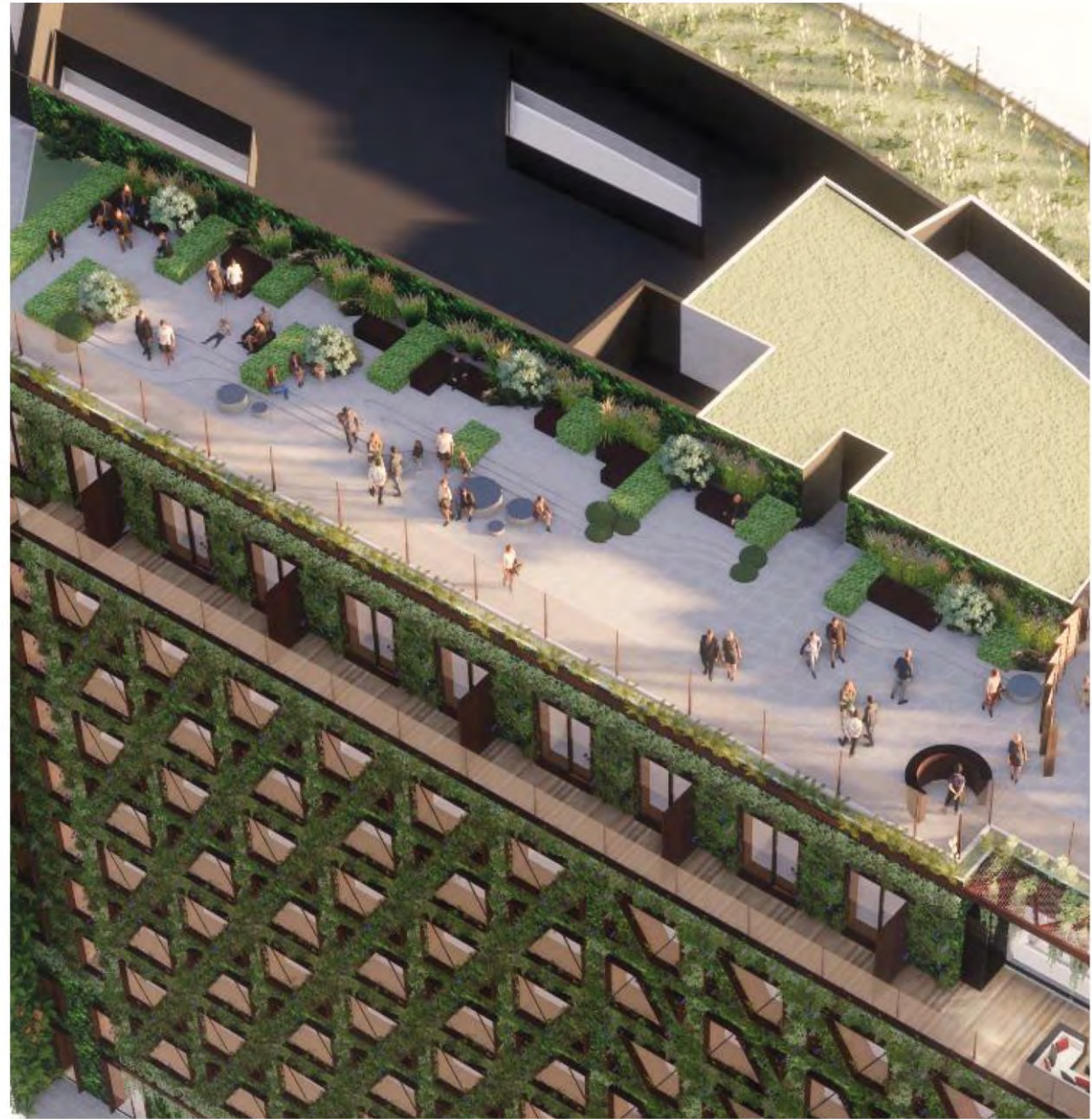
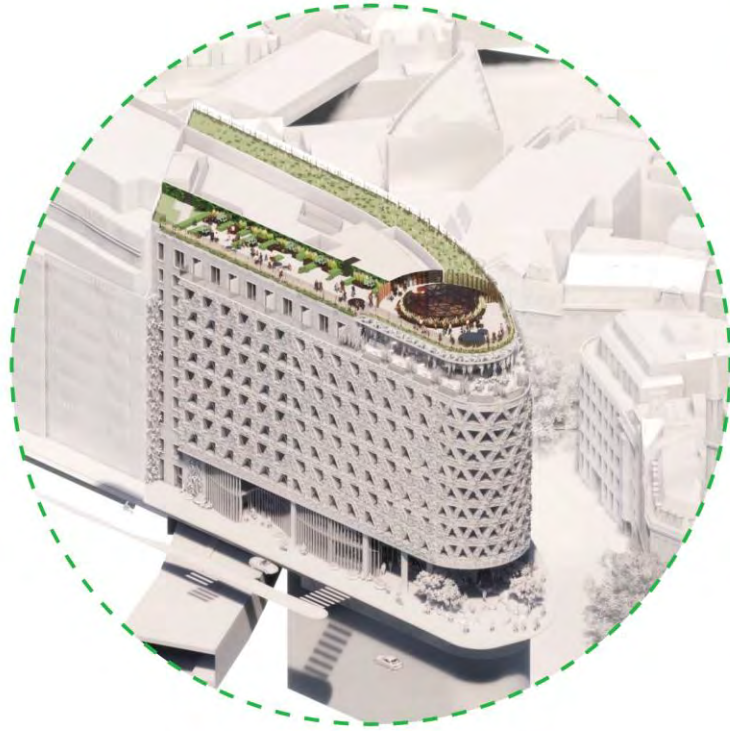
# Citicape House, 61-65 Holborn Viaduct



Proposed visuals - interior



# Citicape House, 61-65 Holborn Viaduct



Proposed rooftop garden



# Citicape House, 61-65 Holborn Viaduct



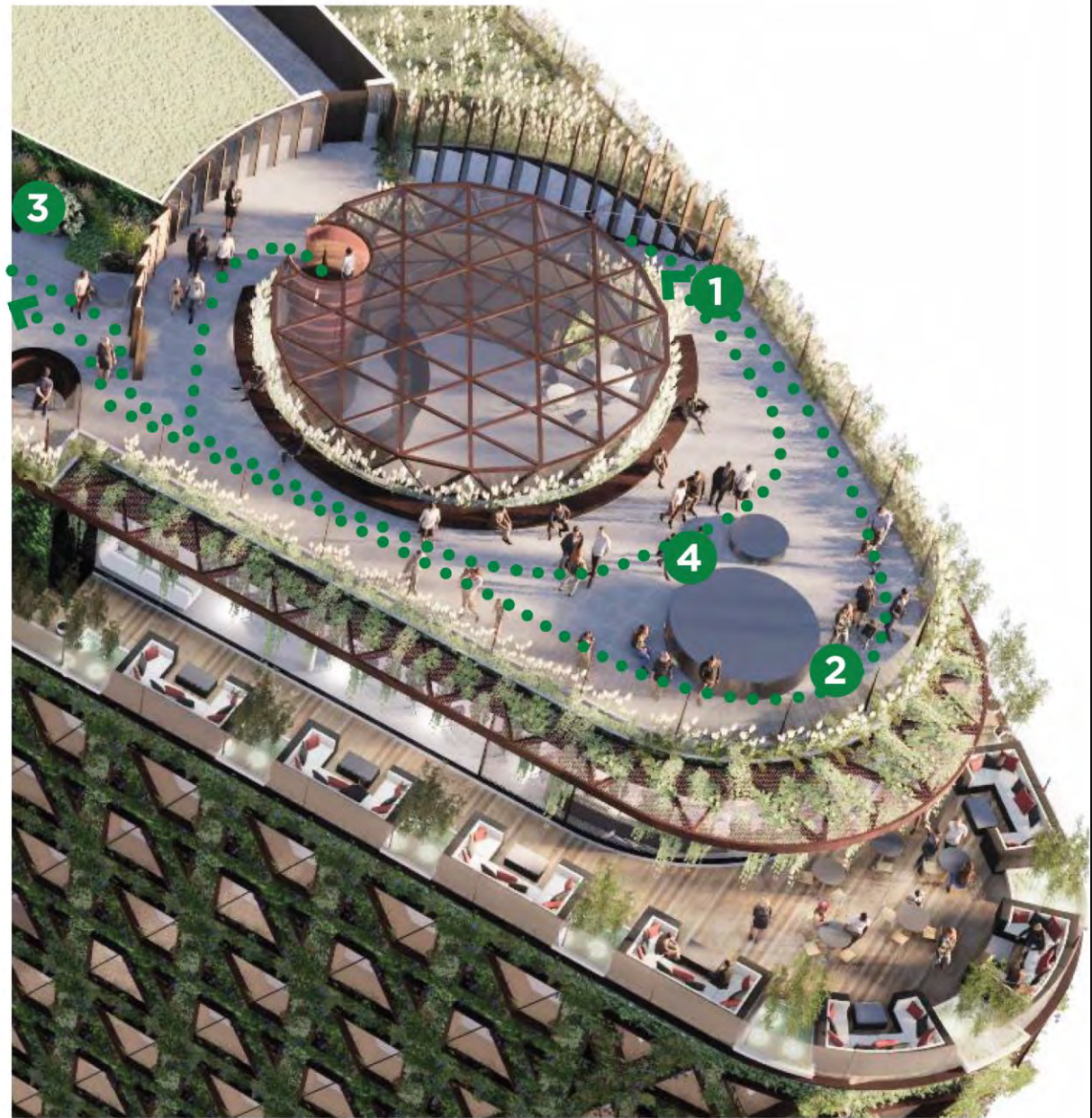
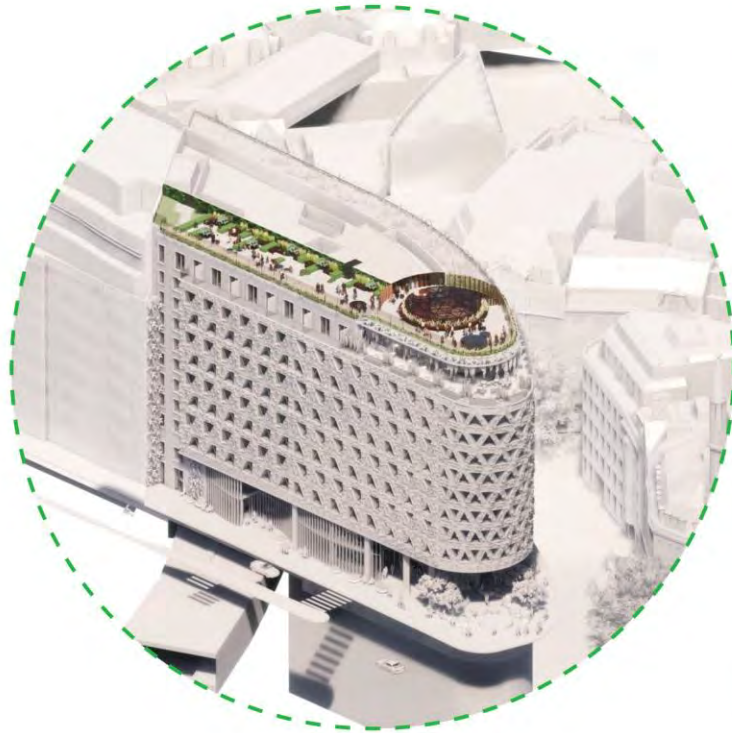
Scan Here



Proposed visual – rooftop garden



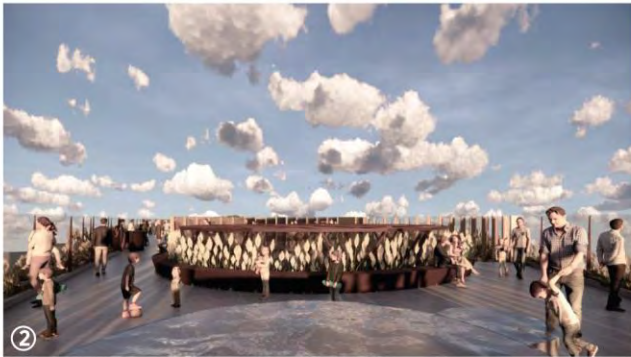
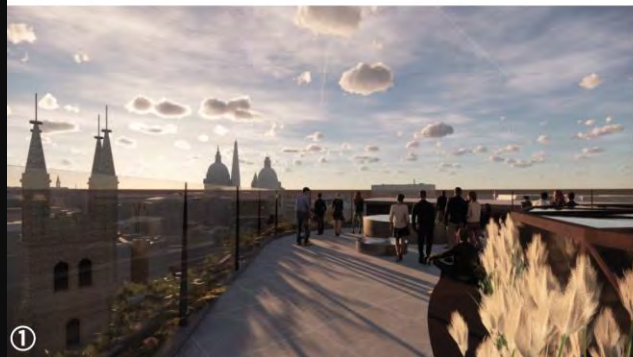
# Citicape House, 61-65 Holborn Viaduct



Proposed prow of the viewing gallery



# Citicape House, 61-65 Holborn Viaduct



Proposed visuals



# Citicape House, 61-65 Holborn Viaduct

What the Building Gives back to the City

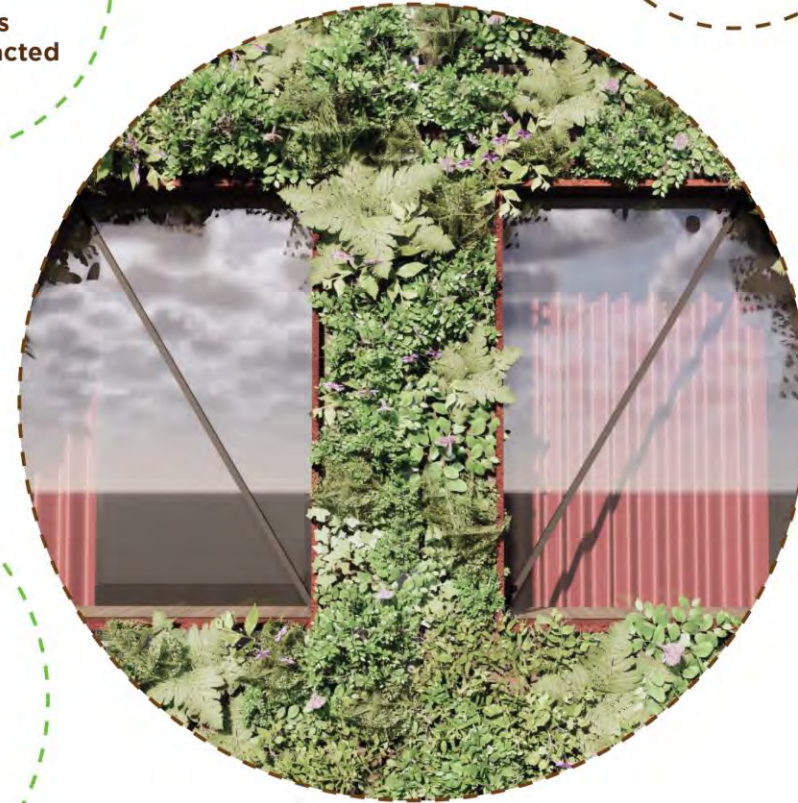


**8.5** Tonnes

of Gaseous  
Pollution extracted  
per year

**400,000**

New Plants within  
the Living Wall



**6.3** Tonnes

of Oxygen  
produced per year

Benefits



# Citicape House, 61-65 Holborn Viaduct



**3-5°C**

Temperature  
reduction in the  
immediate vicinity



**40,000ft<sup>2</sup>**

of Living Wall.  
Largest in Europe.



**483kg**

of Particulate  
Matter trapped per  
year

Benefits



# Citicape House, 61-65 Holborn Viaduct



Proposed aerial visual







# NEXT COMMITTEE

18 February 2020

